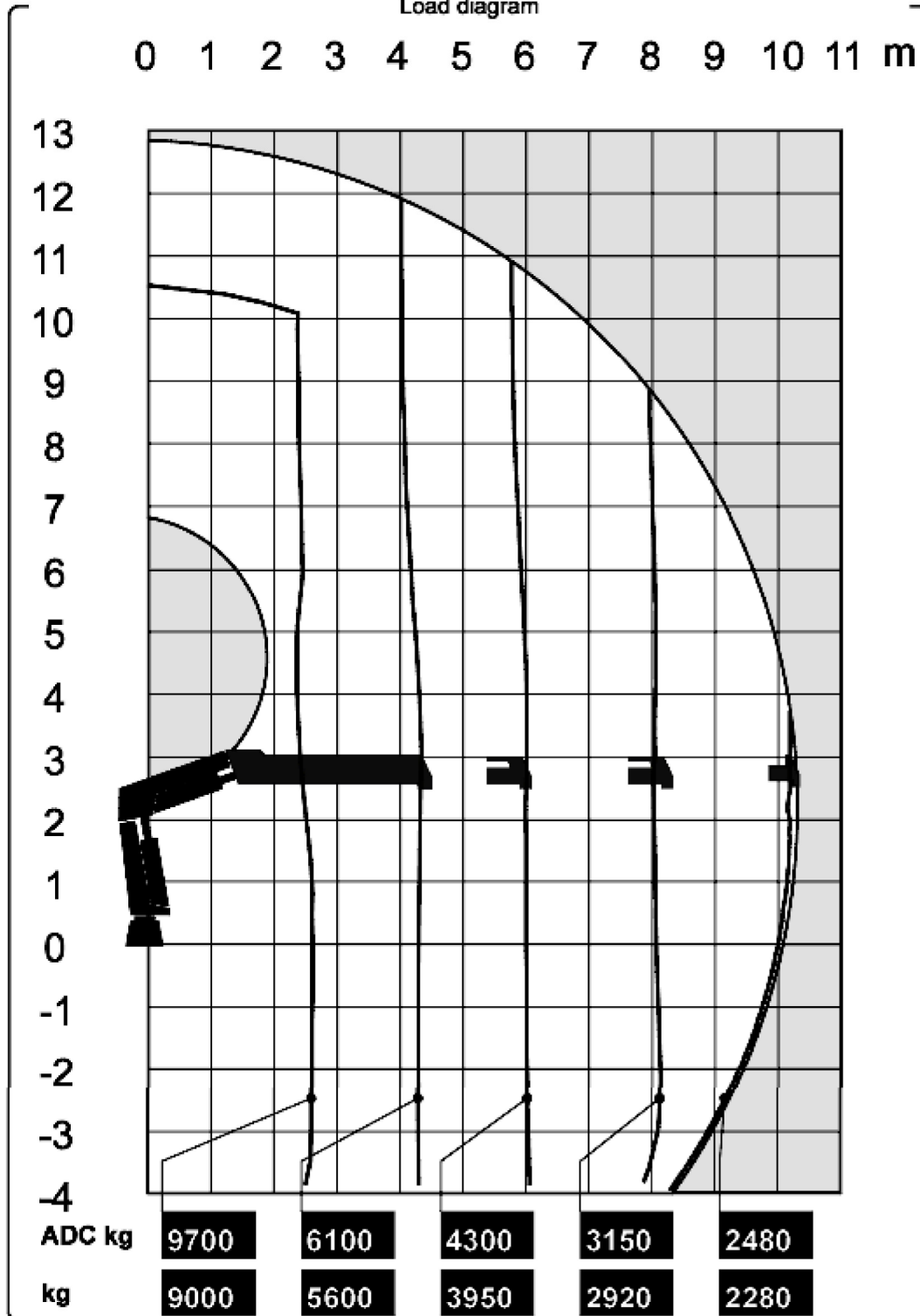


Load diagram



The HIAB XS range



Version		
M _{dyn}		325 kNm
Lifting capacity	kNm	237
Lifting capacity	tm	24.2
Lifting capacity (ADC)	kNm	255
Lifting capacity (ADC)	tm	26.0
Outreach - lifting capacity, standard	m-kg	2.6 - 9,700 4.3 - 6,100 6.0 - 4,300 8.0 - 3,150 10.2 - 2,480
Outreach - lifting capacity, manual extensions	m-kg	12.5 - 1,940 14.9 - 1,560
Hydraulic outreach, standard	m	10.3
Hydraulic boom extension	m	6.0 m
Outreach, manual extensions	m	15.0
Lifting height above installation level, hydr/man	m	12.9 / 17.5
Rec. oil flow	l/min	70 - 90
Power needed at rec. oil flow V80	kW	-
Power needed at rec. oil flow V91	kW	-
Working pressure	Mpa	32.6
Oil in tank	l	0 - 200
Tank capacity	l	0 - 235
Slewing angle	∅	190 - 420
Max slope viable at full capacity	°	5
Slewing torque, gross	kNm	34.0
Slewing speed 80	°/s	15
Slewing speed	°/s	15
Lifting speed at standard hydraulic outreach	m/s	1.6
Height in folded position	mm	2,335
Width in folded position	mm	2,495
Install space required. Rotation area not included	mm	1,185
Install space required with hose and pipe kit	mm	1,185
Weight		
Crane in standard version without support legs	kg	2,840
Top seat	kg	0
Frame attachments	kg	56 - 63
Support leg equipment	kg	381 - 478

Data sheet